

**STUDIO CITY, CA**  
**Allen Edwards Salon+Spa**  
 318.763.4005  
 www.allenedwards.com

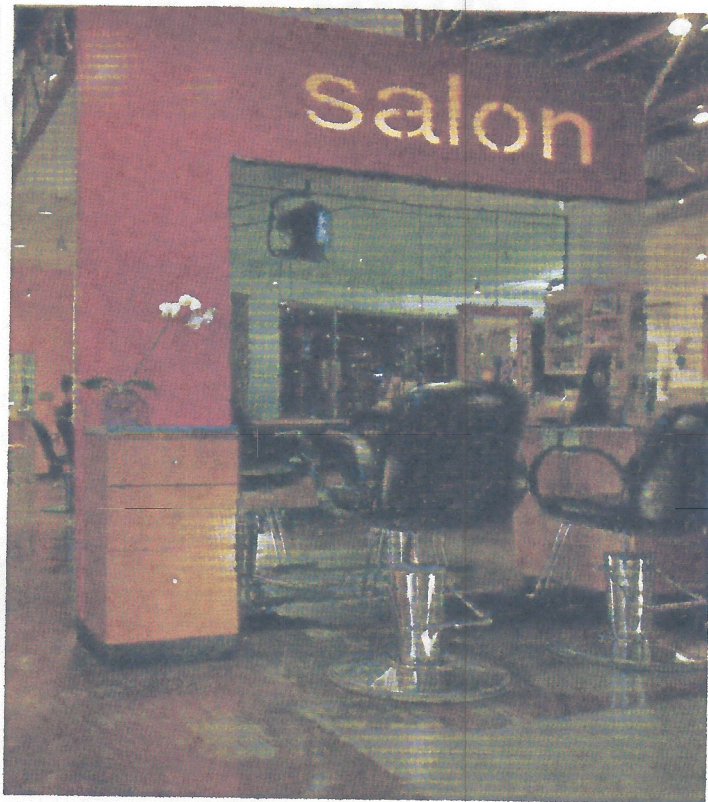
**WHY IT MADE THE LIST**

Celebrated hairdresser Allen Edwards—he's responsible for Farrah Fawcett's iconic haircut—trained with John Peters in the 1970s. That, of course, was before Peters moved in with Barbra Streisand and gave up hairdressing to become a famous Hollywood producer. Edwards also worked on hundreds of television shows, helped launch KMS and held positions at Aveda and Clairol.

Edwards' empire includes a salon in Beverly Hills and salons and spas in Studio City, Woodland Hills, Brentwood and Irvine, California. "We really stress taking care of the client," says Edwards, whose staff makes sure that everyone receives a lengthy consultation the first time they visit. "I encourage our salon clients to bring in pictures of things they like and don't like," he says. "I'm not a star who does what he wants—we design together."

Every hairdresser at Allen Edwards must go through a year and a half to two years of training, plus attend haircutting classes every week. Allen's creative team works fashion shows as well. The spa staff, on the other hand, is trained for a minimum of four months.

"We go above and beyond," says Cyndi Nistal, director of all



Clockwise from top: Bright red and yellow walls brighten up the space; the concrete floors have an acid glaze; the retail area offers a variety of lines—"If a client doesn't buy products from us, she doesn't believe in what we believe in," says Edwards.



three spas. "People stay with us for years; it's their neighborhood spa." Nistal helps bring clients back again and again by keeping the spa menu fresh. "Being creative in your body treatments is good for business," she says. "People get bored with the same old things." Two services that keep boredom at bay are the Pacific Paradise, which includes a pineapple papaya body scrub, and the Orient Express, which uses Chinese herbs.

**SIGNATURE SERVICES**

**Epicurean Enzyme Treatment**

The Epicurean skin care line is used throughout this facial. The skin is cleansed and then exfoliated using an enzyme-activated hot peel that contains cinnamon. Two masks are then applied to the face, one over the other. According to Nistal, these enzyme-activated masks pull the skin tight to help draw blood up to the surface. The client feels a bit of pulsating and twitching as the blood "feeds" the muscles and oxygen helps the body

increase its cell renewal capabilities. The client receives a foot and hand massage while the masks are on the face. Between four and eight products are applied after the masks are removed, depending on the client's skin type. One option is colostrum, which is found in mother's milk and contains a

high concentration of protein. Another is Pro-Collagen. The results are instant: Skin appears tighter and glowing.

**Lemongrass Hot Salt Scrub**

This body treatment is ideal for problematic skin thanks to the antiseptic and purifying properties of lemongrass. The skin is first exfoliated through dry brushing using MOR Lemongrass Hot Salt Scrub. Next the body is hydrated with Lemongrass Body Balm while the feet are smothered in Lemongrass Body Butter, which Nistal says replaces the natural oils in the skin without making it feel greasy.

**MOR Deluxe Wakame Seaweed, Salt and Mud**

Wakame Seaweed and Sea Salt Body Scrub are used to exfoliate the skin all over the body and trigger detoxification. The body is then covered and wrapped with a combination of seaweeds, Australian mud and sea extracts. While wrapped, the client receives a soybean foot massage to condition the soles of the feet and help the body reach a state of relaxation. After a shower, the finishing touch is a light massage with whipped Orange Blossom Body Cream.

**PRODUCT LINES CARRIED**

Bumble and bumble, René Furterer, Aveda, Schwarzkopf, Kérastase Paris, Epicurean, Bioelements, MOR Cosmetics, DDF, Tweezerman, Tend Skin, Osys

